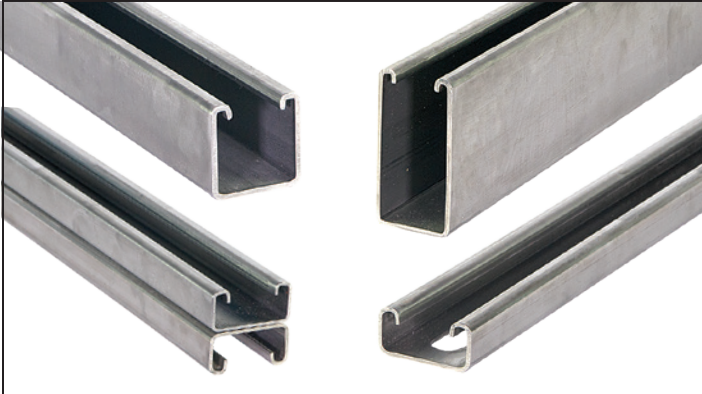


ELECTRICAL ACCESSORIES

COMPLETE SUPPORT SOLUTIONS FOR ELECTRICAL CONTRACTORS

Channel Size Ranges - 10', 20' or Pre-Cut Strut



- 12 Gauge Strut in Sizes: $\frac{13}{16}$ ", $\frac{7}{8}$ ", 1", $1\text{-}\frac{3}{8}$ ", $1\text{-}\frac{5}{8}$ ", $2\text{-}\frac{7}{16}$ ", $2\text{-}\frac{1}{2}$ ", or $3\text{-}\frac{1}{4}$ "
- 14 Gauge Strut in Sizes: $\frac{13}{16}$ ", 1", $1\text{-}\frac{3}{8}$ ", or $1\text{-}\frac{5}{8}$ "
- 16 Gauge Strut in Sizes: $\frac{13}{16}$ " or $1\text{-}\frac{5}{8}$ "
- 19 Gauge Strut in Sizes: $\frac{13}{32}$ " or $\frac{13}{16}$ "

Wide Range Of Materials And Finishes

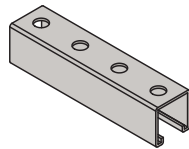


- Steel, Stainless Steel, & Aluminum
- Pre-Galvanized, Hot-Dipped Galvanized, Plain, Powder Coated, Electroplated, Special Coatings

Pierced and Speciality Channel Options

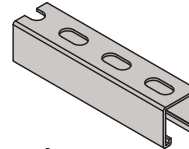
Channel With Holes

- $\frac{17}{32}$ " Holes are punched on $1\frac{1}{2}$ " centers.
- $\frac{9}{16}$ " Holes are punched on $1\frac{1}{8}$ " centers.
- $\frac{3}{4}$ " Holes are punched on $1\frac{7}{8}$ " centers.
- $\frac{17}{32}$ " Holes are punched on 8" centers.



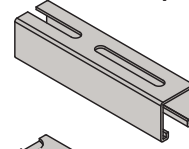
Channel With Short Slots

- $\frac{9}{16}$ " x $1\frac{1}{8}$ " Slots are punched on 2" centers.
- $\frac{11}{16}$ " x $1\frac{1}{8}$ " Slots are punched on 2" centers.
- Allows for $\frac{5}{8}$ " threaded rod & Bolts.



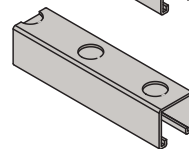
Channel With Long Slots

- $\frac{13}{32}$ " x 3" Slots are punched on 4" centers.



Channel With Knock-Outs

- $\frac{7}{8}$ " Knock-outs are punched on 6" centers.



- Back-to-Back & Other Combinations are available with Holes, Short Slots, Long Slots, or custom perforations.

Electrical Fittings & Accessories



- Fixture Hangers, Conduit Connectors, Rectacle Boxes, Junction Boxes, Raceway Splice Assemblies, & Accessories

CUSH-A-BLOCK® Rooftop Support Series

Pipe & Conduit | Solar Racking | Rooftop Walkways

Mini Block



Standard Block



Biggie Block



Contact Factory for Additional CUSH-A-BLOCK Options



- Resistant to Freeze - Thaw Cycles
- Built-in Channel Guide & Embedded Fasteners
- Dampens Vibrations
- Amazing Rooftop Support Configuration Options
- 100% Recycled Rubber Qualifies for LEED Credits
- Compatible with Most Rooftop Materials
- Eco-Green Reflective Safety Strip Won't Peel

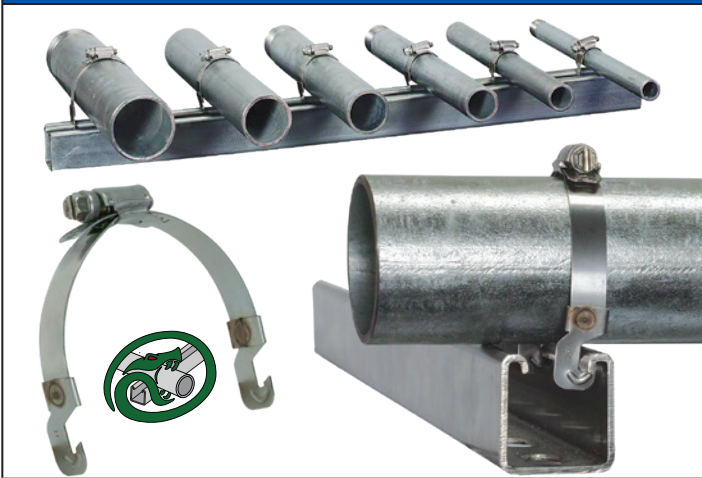
The channel for CUSH-A-BLOCK support assemblies includes a variety of options. The strut can be made in special lengths, finishes, and alloys including Aluminum, Stainless Steel both 304 & 316, PVC coated, Powder coated, Zinc Trivalent Chromium, Pre-Galvanized and Hot Dipped Galvanized.

Spring Steel Electrical Supports



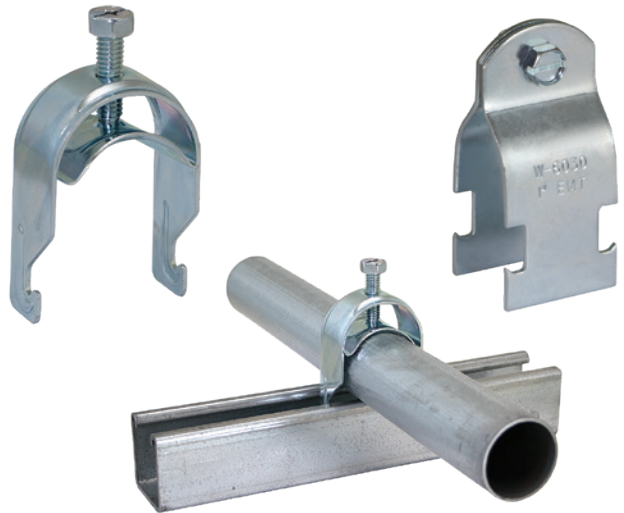
- Electrical Positioning and Support Products
- ZSi's Silva-Guard Finish Offers Super Corrosion Resistance
- Conduit & Cable Supports
- Structural Attachments
- Stud Wall Applications
- Ceiling & Acoustical Applications
- Supports conduit and pipe to a rod, wire, or flange
- Compatible with many industry standard installation tools
- Pre-punched holes allow easy box or conduit attachment
- Majority are UL Listed

STRUT SERPENT®



- Supports Pipe and Tube
- Electrical and Mechanical Applications
- Easy Relocation of Conduit, Pipe, or Tube Prior to Final Alignment with Very Clean Appearance
- Secure the Conduit, Pipe, or Tube Above and/or Below the Strut
- Perfect for Trapeze Applications
- Worm Gear fastening method that ensures the proper torque-tension

Strut Clamps & Conduit Hangers



- EMT Strut Clamps
- Rigid Strut Clamps
- One Bolt Electrical Pipe Clamp
- Hooks Quickly and Easily into Channel
- Electro-Galvanized Finish
- Electrical Conduit Applications
- Secure the Conduit, Pipe, or Tube to Strut

CUSH-A-CLAW®

Strut Mounted

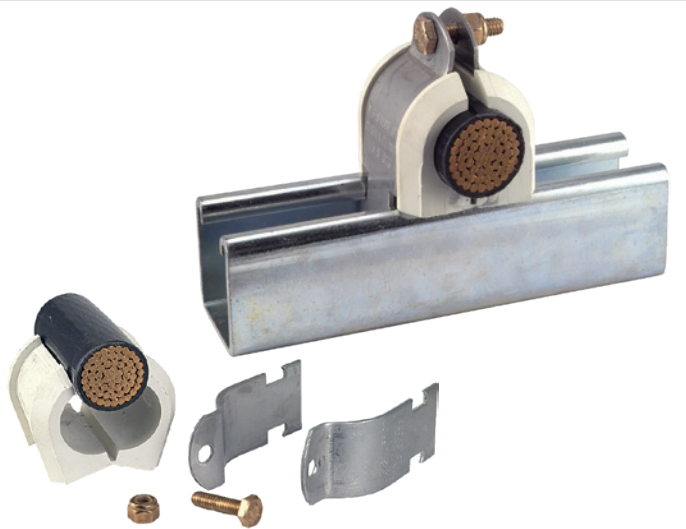


Surface Mounted



- Standard Temp. -50°F to 275°F
- Easy Snap-in Installation of Tube, Pipe, or Hose
- Seven Sizes of Tube & Three Sizes of EMT
- Non-Conducting, Will not rust
- Designed for Light Duty Loads and Applications
- Prevents Galvanic Corrosion of Dissimilar Metals
- Sure Grip Strut Base easily rotates into strut
- Saves Time and Money, Works Great Indoors or Outdoors

PORCE-A-CLAMP®



Replaces Porcelain and Maple Cable Clamp. Assembly consists of thermoplastic elastomer cushion with plated or stainless steel clamp. Plated steel and stainless are both supplied with Silicon Bronze bolt and nut.

- Non-breakable material, Chemical & UV resistant
- Tapered flange to protect cable
- Dielectric strength 640 volts per mil
- One piece cushion design

Utility Brackets



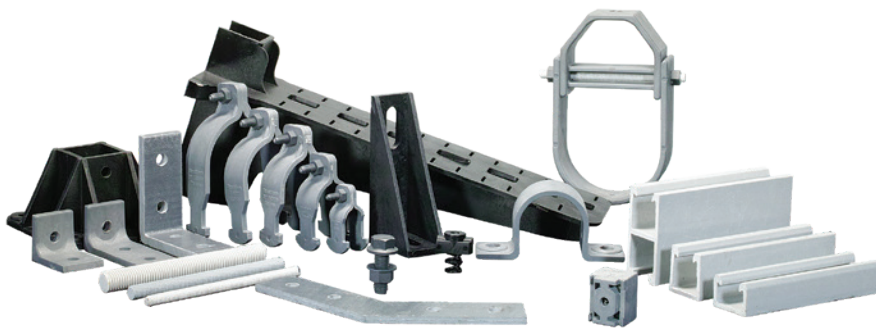
- One Piece Design Allows for Easy Installation
- Uses $1\frac{3}{16}$ " or $1\text{-}\frac{5}{8}$ " Strut in Standard or Back-To-Back
- Versatile Solutions for the Support of Conduit
- Cross Back Extended Riser Brackets
- Strap Back Extended Riser Brackets
- Diamond Back Extended Riser Brackets
- Low Profile Diamond Backs
- Standard Finish: Hot Dip Galvanized (HG)

General Fittings and Accessories



- 100% Adjustable, 100% Reusable, No Drilling, No Special Tools
- Wide Range of Materials and Finishes including Stainless Steel
- Vast Assortment of Fittings and Accessories to Complete Every Project
- Channel Nuts and Hardware
- Flat Plate, "Z" Shape & "U" Shape Fittings
- 90° Angle & Wing Fittings
- Brace Fittings, Brackets, Post Bases & Trolleys
- Beam Clamps, Pipe and Conduit Supports
- Concrete Inserts & Gamma Anti-Vibration Pads

Fiberglass Framing System



- Durability for Corrosion Resistance in Challenging Environments
- Light Weight & Fire retardant
- Interchangeable with Industry Standard Channel Systems
- Easy to field cut and drill
- Complete line of corrosion-resistant fiberglass components
- Easy to cut and fabricate